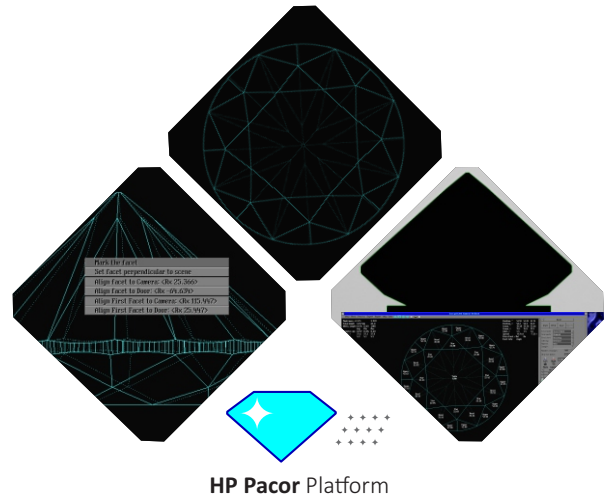
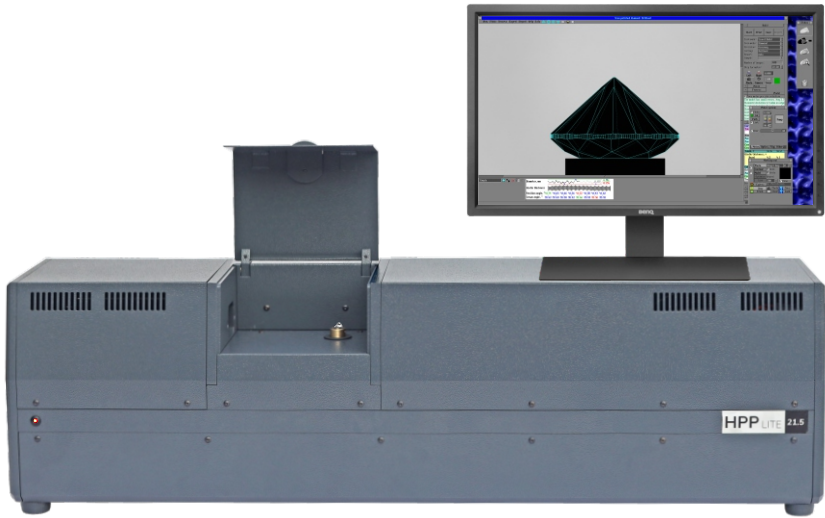




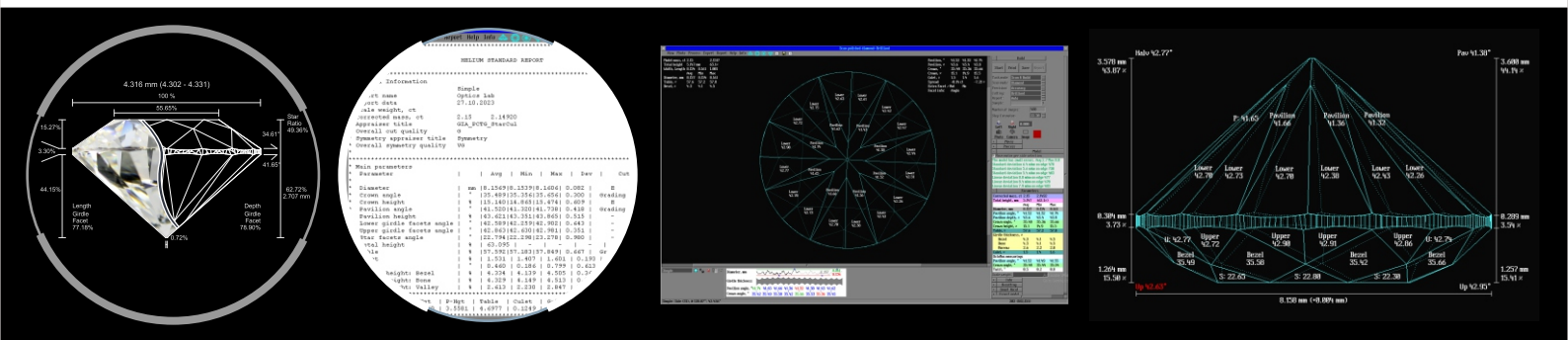
# HPP LITE



The Most Accurate Polish Diamond Scanner for LGDs



Support LGD Cutting and Polishing industry



## Introduction :

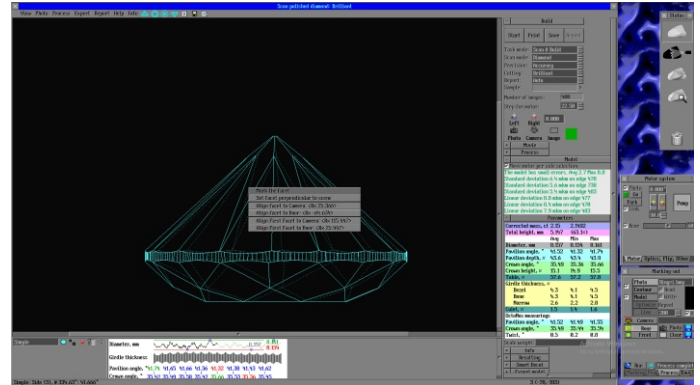
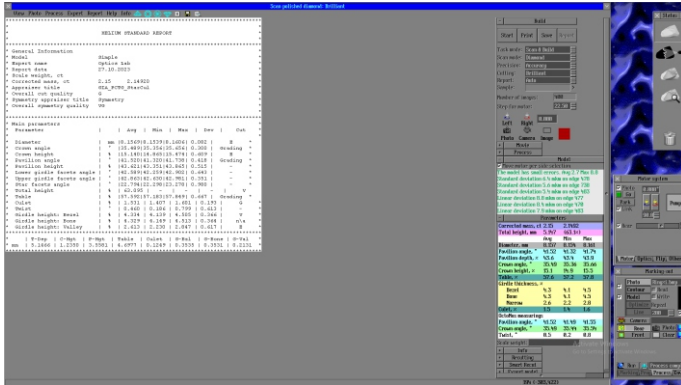
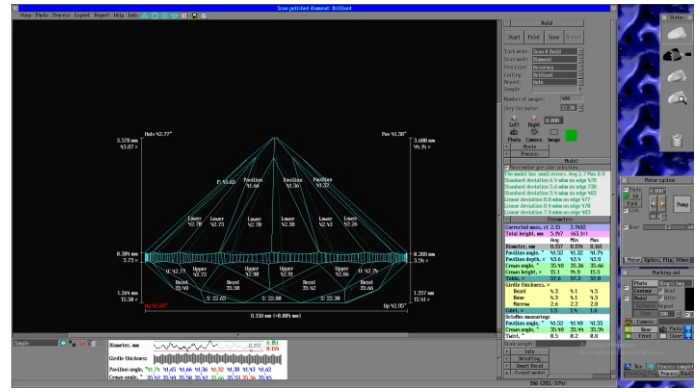
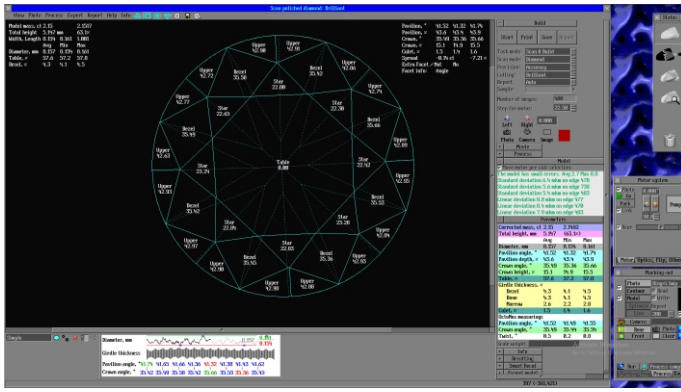
The HeliumPolishPacor-Lite scanner is introduced to support LGD Cutting and Polishing industry, which mainly demands scanning of the diamond only at the final polishing stage to check the quality. It comes with promised consistency, but not with the same utility and precision as Helium Polish Carbon scanners.

The following features of Helium Polish Carbon Scanners will be missed in this low-cost scanner:

- Smooth acceleration-deceleration to scan large diamonds without the risk of a diamond shifting on the stage.
- Heart Groove and/or other concave groove construction using X-ray scanner integration.
- Compatibility with X-ray MicroCT scanner.
- Compatibility with Aqua2 Fancy Bruter.
- Compatibility with GALAHAD Compass.
- Compatibility with GALAHAD Compass+ for automatic Blocking of Fancies.
- .OBJ export for pre-faceting on Laser and/or Ceramic faceting machines.
- SMART Anycut.
- Sample Model Construction.
- Integration with Reflect scanners for precise Fancy model construction.
- Model correction tools to edit model edges.
- Custom Report.
- Advance Reco feature for manufacturing assistance.
- X-Ray shapper to import cavities from the previous model.
- GALAHAD Advisor.
- Inclusion and cavity plotting on images.
- NEW DEVELOPMENTS, UPDATES AND UPGRADES.
- Photoreal rendered images.
- i3D report.
- GIA Facetware.
- GRAIN DIRECTION ADVICE for LGDs in GC.

## Specifications :

15.450 kg | L720 x w160 x H210mm | 13.5mm x 21.5mm



## Specification

MODEL	HPP LITE 21.5
Field of View	: 13.5 x 21.5mm
Polish Size	: 4.5mm to 21.5mm
Diamond Types	: Convex Cut
3D-model accuracy	: 11.1 microns
Standard Re-Cut Option	: Available
Asymmetric Smart Recut option based on GIA Facetware + MyGIA	: Not Available
GIA Facetware based Grade estimation	: Not Available
Soft HTML5 Report & i3D Report	: Not Available
Print Reports	: Available
Custom Reports	: Not Available
Mfg. Warranty	: 12 months
Projected RBC range	: 0.35 to 33 Cts
Projected Marquise range	: 0.60 to 9.3 Cts

## Hardware Specification

MODEL	HPP LITE 21.5
Lens	: 0.528x
CMOS Camera	: 1/1.2" - 1936X1216
Computer Requirement	: View Specification here
Operating System	: Windows 10 Professional- 64bit
Weight	: 15.45 Kg
Dimensions L x W x H	: 72x16x21 (cm)
Power Consumption	: 220V 50Hz 300W (Other than this, contact us)



Ichchhapore, Surat, INDIA



sales@lexusindia.in



+91 261 229 0555



www.lexusindia.in