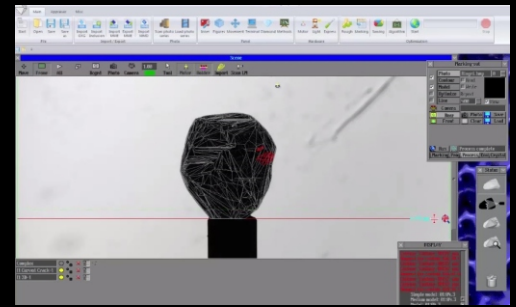
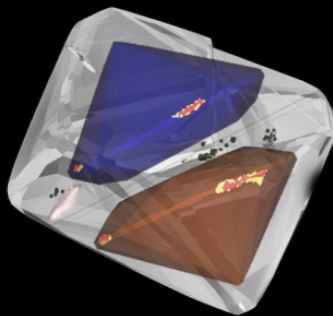
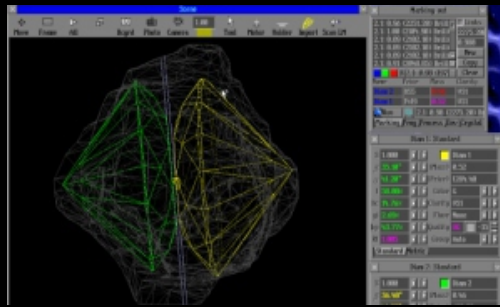
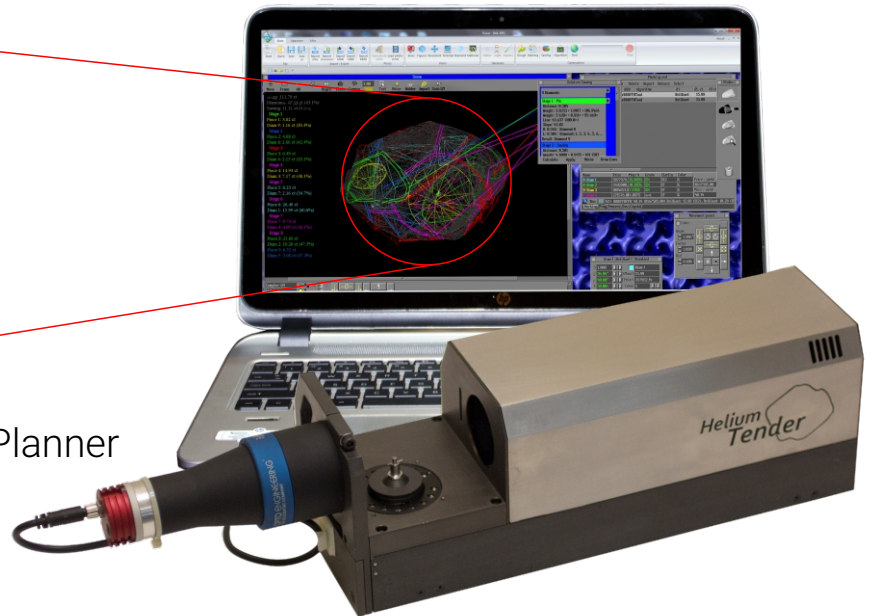


Portable Inclusion & Value based Planner With Cavity Mapping



Product Description

- Accurate and Advance Rough Cavity & inclusion mapping, value based planning equipment, optimizing rough with value analysis and sawing plans.

Salient Features

- Any inclusion including Gletz / piques / bubbles (VS to I) can be considered.
- The machine intelligence will help you in deciding if inclusion removal or re-orientation will maximize your profit. At the time of tender, this is even more important
- If the suggested plan includes the inclusions, machine software will show you where those inclusions will be reflected in the polished stone. The machine will grade the finished stone based on size of inclusions left inside the polished stone, its orientation and its reflection / refraction inside the polished stone. Model building accuracy is better than 0.020 mm makes this possible.
- Can be transferred to M-Box for VVS1 to IF Inclusion.
- Free Oxygen Viewer will make it possible for your overseas office to participate in critical decision making. They will be able to view the provisional / final plan of the virtual stone, and give their consent before further process.
- LAN configurable and multi user environment software support reduces overall cost. Inclusion placement and allocation can be done in off machine mode to reduce load on the scanner and increase its utility factor (reduce overall investment).
- Can handle size up to 32mm or 61mm.
- The software is specifically designed to accurately suggest the most profitable planning options in value recovery terms. In the process the Rapaport / user specific price structure can be used.
- Offline working mode - you can scan the stone overseas and plan your stone locally - value based and inclusion based.
- Easy to install. Just Connect to USB Port of your laptop and Go.
- Easy to carry with portable carry bag.
- No Re - Alignment required.

Specification

Camera Model: MC023MG-SY CMOS 1/1.2" Resolution: 1936 x 1216 (ratio 1.6:1)		
2.3 Megapixels Monochrome CMOS camera with Sony IMX174		
MODELS	HT ⁺ 32	HT ⁺ 61
➡ Field Of View	20.3 x 32.3 mm	38.6 x 61.4 mm
➡ Rough Size	2.5 Ct to 130 Ct	15 Ct to 900 Ct
➡ 3D-model accuracy	17 μm	32 μm
➡ Terminal Software	At Extra	Included
➡ Lens	TC23024 - 0.35x	TC23048 - 0.184x
➡ Diamond Type	Any Cut	
➡ Diamond Holding	Glue assisted	
➡ 3D Inclusion Mapping	Very advanced - working on images of windowed stone	
➡ Concavity Mapping	Yes	
➡ Optimization	Auto / Manual Sawing, Single / Multiple	
➡ Print Reports	Available (very detailed + user definable)	
➡ Electronic Reports	Free reader software (any numbers). Important for Manufacturing support	
➡ Warranty	12 months	
➡ Lens	0.35x	0.184x
➡ Camera	CMOS 1/1.2" - 1936 x 1216 pixel	
➡ Computer Requirement	Intel Core i7 4 th Generation 4700K or Higher, Ram 16GB and 500GB HDD SATA	
➡ Operating Systems	Windows 10 Professional - 64 bit	
➡ Weight	8 Kgs	9 Kgs
➡ Dimensions	37 x 12 x 13 cm	47.5 x 13 x 13.5 cm
➡ Power Consumption	110/220V 50/60Hz 40W	

