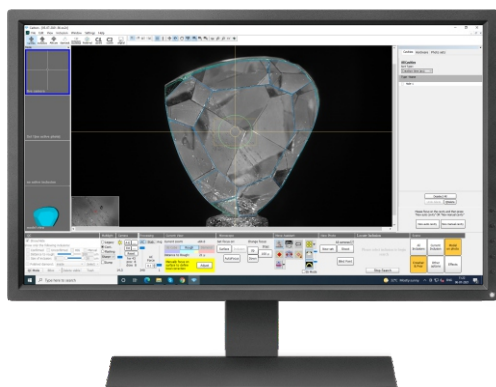
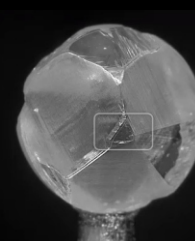
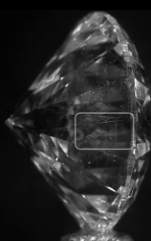


LEXUS M-Box 3.0 x16



5 Axis Dual Camera – Completely Motorized Microscopic for Automatic 3D Inclusion Plotting



Salient Features

- Two separate vision channels with Dual camera output
- No Size Limits. Suitable for 0.10 Ct to 1000 Ct Rough Diamond
- Pixel resolution of 0.0007 mm and 0.0059 mm. Suitable for VVS1 to I3 Inclusions
- Revolutionary overhead Adaptive Light illumination offers REFLECTION-FREE illumination to empower human observation and enhance machine vision
- Completely Automatic Scanning of Entire volume of the diamond from all logical directions (under Immersion Glass)
- Auto Brightness & Contrast control gives very crispy on-screen display
- Possible to see even through heavily frosted skin under immersion Glass, thanks to short depth of view
- Auto focus and auto plotting of fine inclusion

Specifications

	Channel 1	Channel 2
Camera	CMOS 1/1.2" 1936 x 1216 BW	CMOS 1/1.2" 1936 x 1216 BW
Resolution (mm/pixel)	0.0007	0.0059
Field of View (mm x mm)	1.41 x 0.89	11.3 x 7.1
Rough size	0.10 to 500 Ct	
Diamond type	Rough, blocked or polished	
Inclusion viewing	Through flat faces or under immersion Glass	
Inclusion type	Any, including VVS, graining, cracks, crystals, etc..	
Diamond holding	Glue assisted for rough and between pins for polish	
Inclusion plotting	Auto suggestion and orientation from next direction	
Auto plotting under iG Cube	Yes	
Lighting	Advance Adaptive Light (iG light included with iG license)	
Diamond Movements	Motorized - 5 axes (X,Y, Z, Rx and Ry)	
Report	Carbon viewer : http://demo3d.cutwise.com/carbon-web/?data/2102045FMBC-68-3.121_R10.cbr	
Plan sharing for approval	Cutwise - My solution : https://cutwise.com/projects/75377f12-80ed-4b12-827b-3ff0daababfe/solutions	
Warranty	12 months from date of installation	
Weight	40 kgs	
Dimensions (mm)	620 (W) x 415 (D) x 655 (H)	
Power Consumption	250 W (110-220V 50-60Hz)	



Ichchhapore, Surat, INDIA



sales@lexusindia.in



+91 261 229 0555



www.lexusindia.in