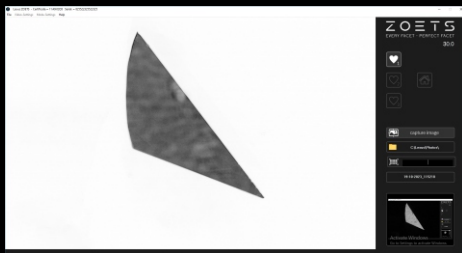
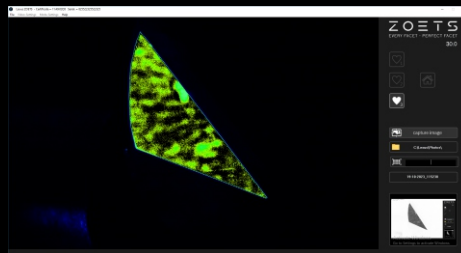


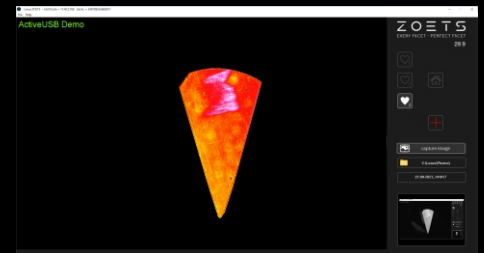
Objective Grading "Smoothness" and many more...



Normal Mode



Outline Mode



Reverse Mode

### Product Description

- You cannot afford to miss the surface glass. Here is the tool to help the polisher judge the smoothness.
- The 'smoothness' of a facet is the degree to which polishing lines are visible. It is therefore an important aspect of the finishing grade of a diamond's facet. Because of the constantly increasing quality demands placed on polished diamonds, smoothness becomes an increasingly important diamond quality feature.
- By using a special light source, Zoets visualizes the surface finish of a facet with very high contrast. This requires that the facet be positioned perpendicular to the optical axis of the measuring tool, which can be easily achieved when the stone is still in the tang.

### Specifications

➔ Weight	:	5 kg
➔ Dimension	:	└390 Xw150 X H110mm
➔ Power Supply	:	220 VAC, 50 Hz, 1 Phase
➔ Field Of View (FOV)	:	9 mm x 5.5 mm
➔ Computer	:	Any Latest & Installed with Windows 10 64 bit