



### Q-1. What is Immersion Glass technology?

“Immersion Glass” is the technology developed by Lexus / Octonus which can be used to view inclusions inside the rough stone without physical windowing, to view those inclusions using Eye-glass or microscope and to perform planning and plotting using M-Box and Helium Rough.



### Q-2. Who can use this technology?

Any Rough diamond Companies , whether trading or polished diamond manufacturing companies – ALL - can use this technology.



### Q-3. I don't have any planner machine. Can I use this technology?

Yes, you can use this technology via Lemon TechnoMist (<http://www.lemontechnomist.com>) for following tasks by paying pre-determined charges:

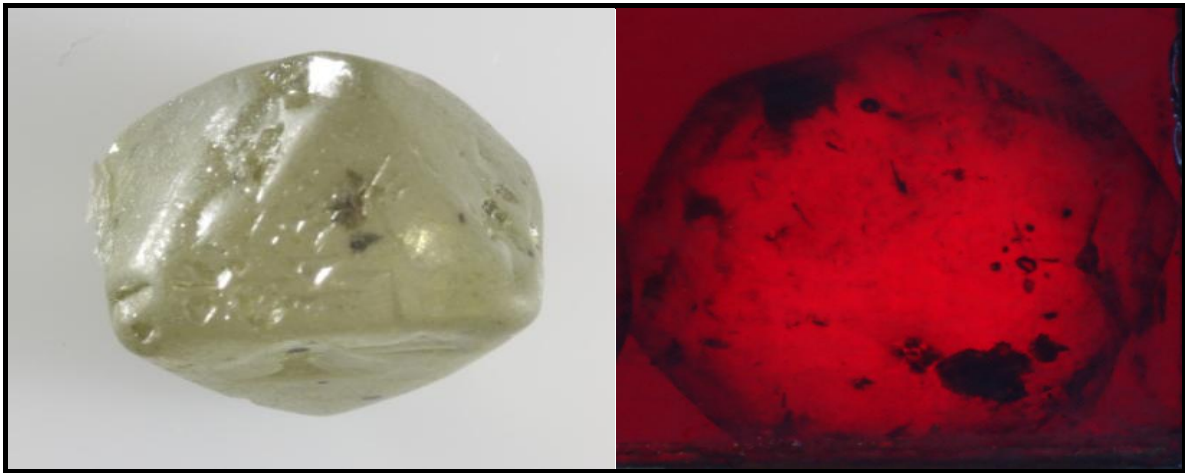
- IG Molding – To view inclusions inside the Rough stone without planning and plotting
- Complete planning and plotting of Rough stone.





#### Q-4. I don't have Helium – Mbox machines but I have other Planner machines. Can I use this technology?

You can use Immersion Technology for just viewing inclusions in rough stones but for planning and plotting Helium-Mbox is required. Otherwise you can use services from Lemon TechnoMist as mentioned in 3<sup>rd</sup> point.



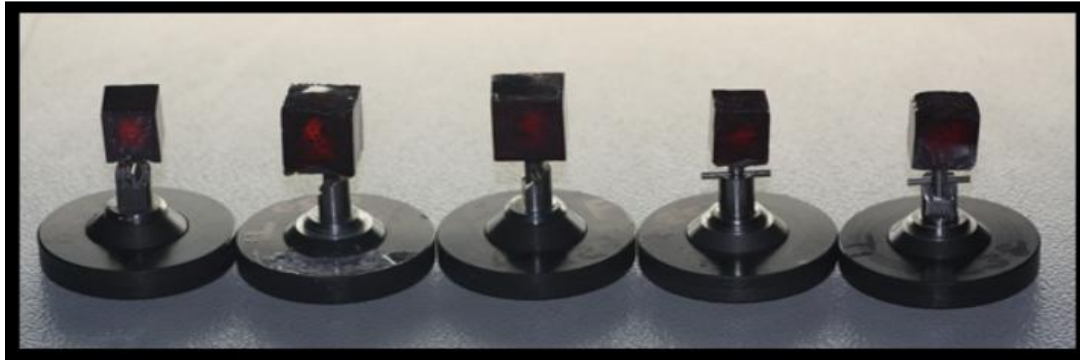
#### Q-5. Is there any size limit for stones in this technology?

No, you can have rough stones of 0.10 ct. to 1000 ct.





## Q-6. How Much Production is expected? How many stones or carat per day can be processed in this technology?



In this technology, you can achieve tremendous production depending upon the task you want to perform

- (a) If you just want to observe the stones like a Rough Trader , approx. 10 Stones of any sizes can be molded in a single heater with a cassette ....giving productions as good as 50 carats in two hour per Heater . So theoretically you can get production of around 250 carat per hour if you have 10 Heaters. Or approx. 2000 carats per day of shift of 8 hours. (Of course the number of heaters and manpower has to be increased in similar manner)

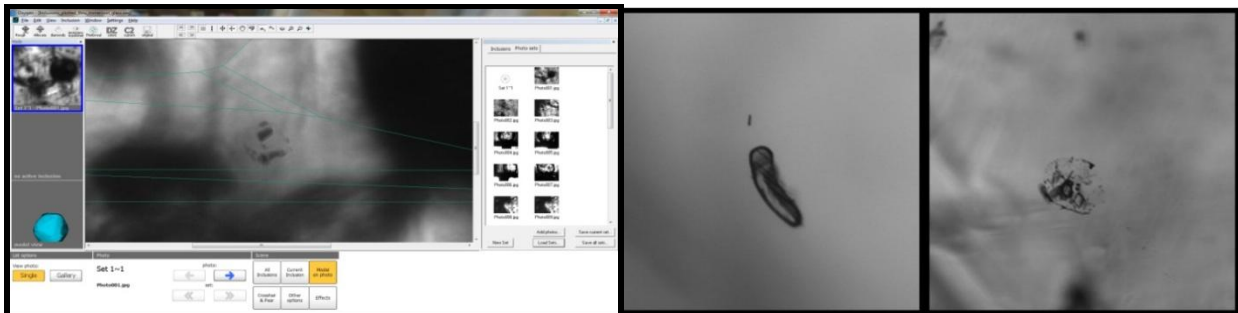


- (b) If you want to do the Plotting of Inclusions with a single Mold system in Helium Rough and M-Box , the molding time remains the same for 1 stone or for multiple stones (Max 5 Stones in one heater ) i.e Approx. 1 to 2 Hours. Additional Auto Plotting on Helium Rough will take extra 1 minute to 5 minutes for Automatic plotting (Commencing on 1<sup>st</sup> March 2012) and for M-Box Checking and M-Box plotting can take 5 minutes to 1 day per stone depending upon the complexity and minuteness of the Inclusions for your final quality grades. From our observations & study, most of the time is consumed in correctly locating the inclusions which are of order of few microns for VVS quality rather than plotting time.

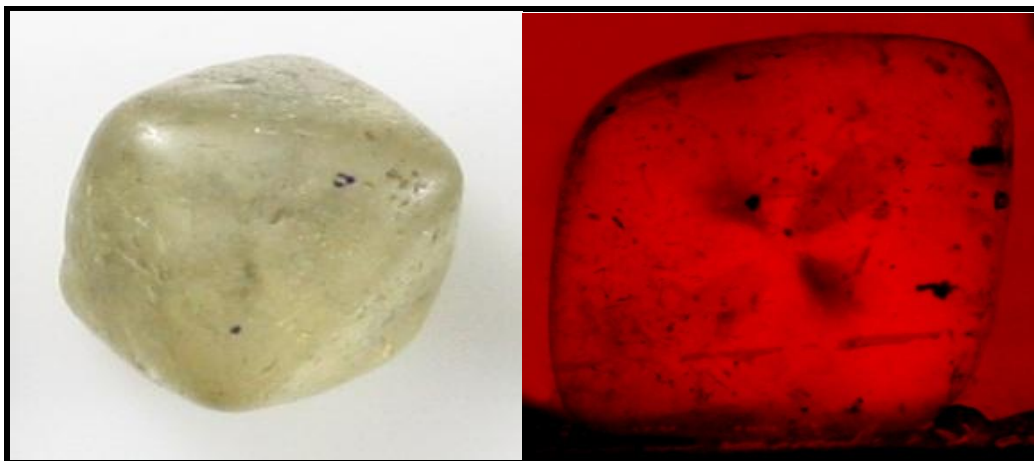


**Q-7. Which type of inclusions can be seen using this technology?**

In this technology, you can see any type of inclusion. If you have Mbox for plotting, you can plot watery cracks, fungus, Jalas & Reshas of any color, Different types of Clouds, VVS pin point etc. In addition to that, you can also plot brown colored lines and white fungus.



We can see also this types of inclusion in stone.





## Q-8. I want to have demo on my stone. What will be the estimated charge?

There are two types of demo are available:

- a) In this type, you can just view the inclusions. Molding charges will be approximately € 7 per Gram (On assurance of returning glass in maximum 2 days). Currently, we are not charging labor charges.
- b) If you have Helium Rough – Mbox technology, you can get plotting service also and get plotting file of the stone. On this plotting file, you can do planning on your Helium rough – Pacor technology. Contact on +91 261 2631942 for plotting charges.

## Q-9. I have low quality and low value rough for example Zimbabwe stone .So is this technology proficient for such low value goods?

Yes, because all inclusions can be viewed at once and decisions can be taken quickly.



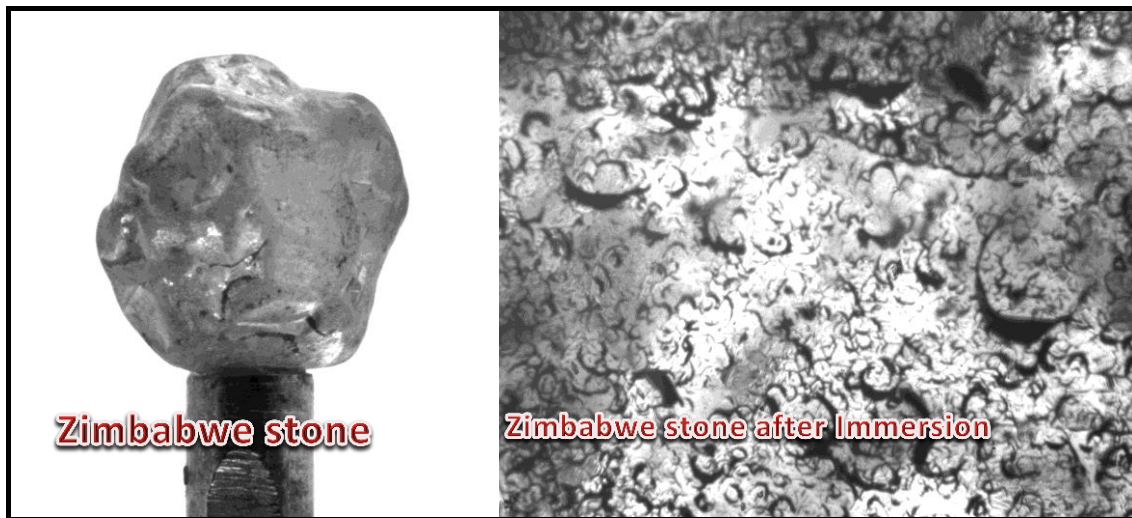
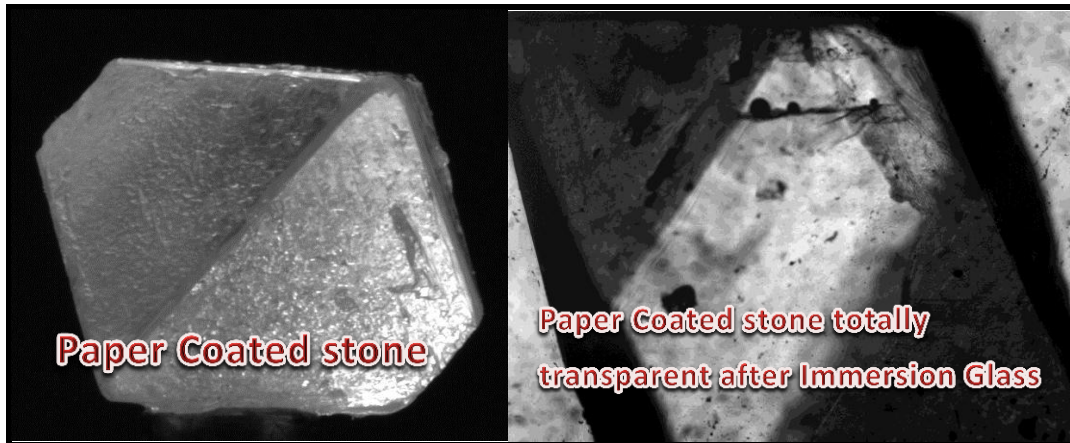
## Q-10. How much glass is used in 1 carat stone? For how many times, we can use this material?

For 1 Carat stone, approximately 1 to 2 gram of Immersion glass is used which you can use for 5 to 10 times.



### Q-11. Can we view inclusions in Paper Coated and Zimbabwe rough?

Yes. We have got excellent results in Transparent/Semi Transparent, paper coated and Zimbabwe rough for most of the times.



### Q-12. Is this technology Safe to use ? Is there any side effects?

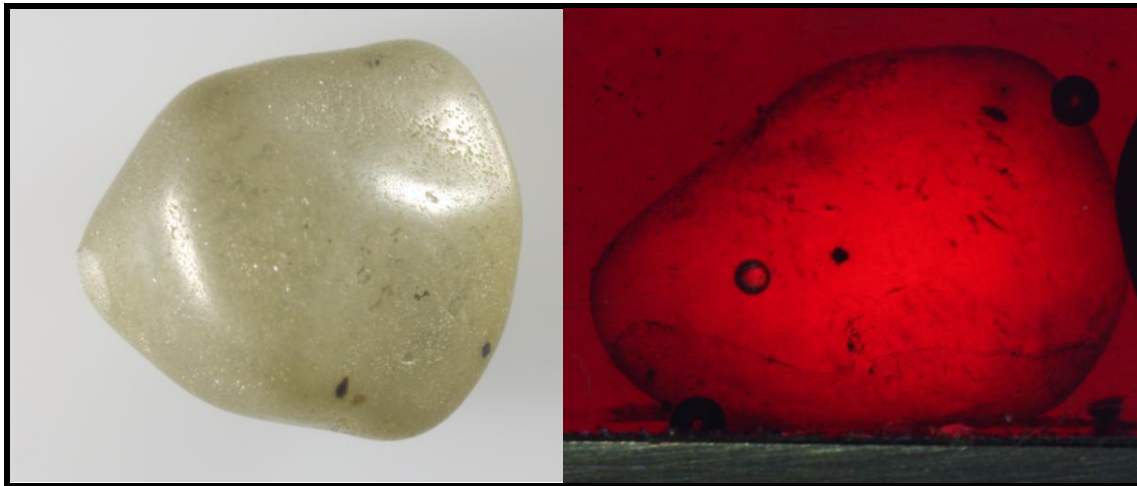
Yes, this technology is completely safe. **“Occupational Safety and Health Administration (OSHA)”** has declared Immersion Glass as completely safe material at room temperature. Please refer to our Material Safety Data Sheet (MSDS) for more information.





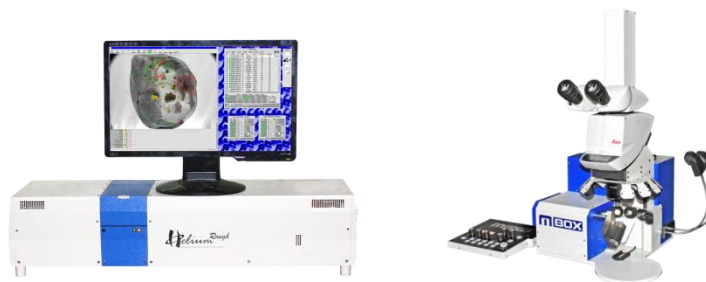
### Q-13. What is the principle of this technology?

In this technology, Immersion Glass material is used. Immersion Glass is the material having nearly same Refractive Index value as Diamond and is solid at Room temperature and melts to liquid at around 100°C. We can heat Immersion Glass and Diamond in cubical mold so glass and diamond will become a single entity and reflections of inclusions will be removed. Due to absence of reflections, plotting on Mbox is very easy and can be done by even non-experienced operator.



### Q-14. I have Helium Rough but I don't have Mbox or it is older so can I use this technology?

In this technology, MBox 205 or MBox digital is required. To upgrade your older MBox to latest one, contact Lexus on +91 261 2631942





### Q-15. Is there any Auto - Plotting Software in Helium or M-Box?

The Auto Plotting algorithm is in final stages of release & publishing. It will be available to all clients of Helium Rough by 1<sup>st</sup> of March 2012! .For M-Box , Automatic plotting of Big Inclusions, Auto - Cloud and Automatic scanning of cavities have been introduced recently. Please contact Lexus for such latest versions in M-Box or visit our web site at <http://www.lexusindia.in>



### Q-16. Do we have to sign any contract in this technology?

Yes, you have to write ethical contract in which you will assure us that you won't be misusing this technology.

### Q-17. Will you be recycling glass if it gets dirty? What are the charges for it?

Yes. Approximate cost of recycling is € 3 to € 6 per gram. There might be weight loss of 10% to 20% depending on impurity present in glass.



### Q-18. I have Helium Rough and MBox so what is the cost to upgrade this technology? What modifications are required?

You have to setup the IG lab for this and purchase the IG heater from Lexus. Approximate cost of this heater is € 6860 + 5% tax (Technology Transfer included) + Glass at € 7 per gram.

Until the introduction of Automatic software, IG software is free on MBox. After that charges will be as follow:

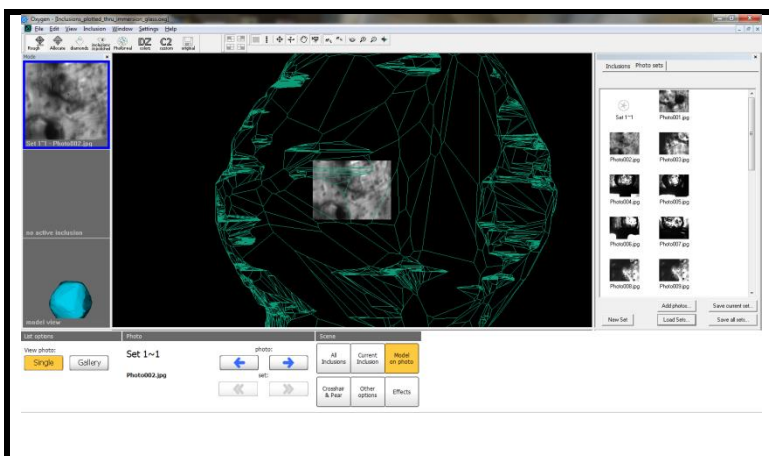
- A. MBox Immersion Software : € 5000 per year + € 2 per carat
- B. Helium Rough auto plotting software (for inclusions up to VS) prices are as follows:

Model of Helium Rough	Size of Stone	Price
<b>H R 8.5</b>	Up to 1.5 ct.	€ 5000
<b>H R 17</b>	Up to 5 ct.	€ 15000
<b>H R 23</b>	Up to 10 ct.	€ 25000
<b>H R 34</b>	Up to 25 ct.	€ 35000
<b>H R 47</b>	Up to 100 ct.	€ 45000

(All the prices here are indicative. Please Contact Lexus for exact pricing)

### Q-19. After getting MBox software and Immersion, how much production gain can be achieved?

At least 2 to 5 times production gain can be achieved because you don't need to do 90° windowing on the stone. Due to Immersion molding, 90° windows will be created automatically.





### Q-20. What is the annual royalty in this technology?

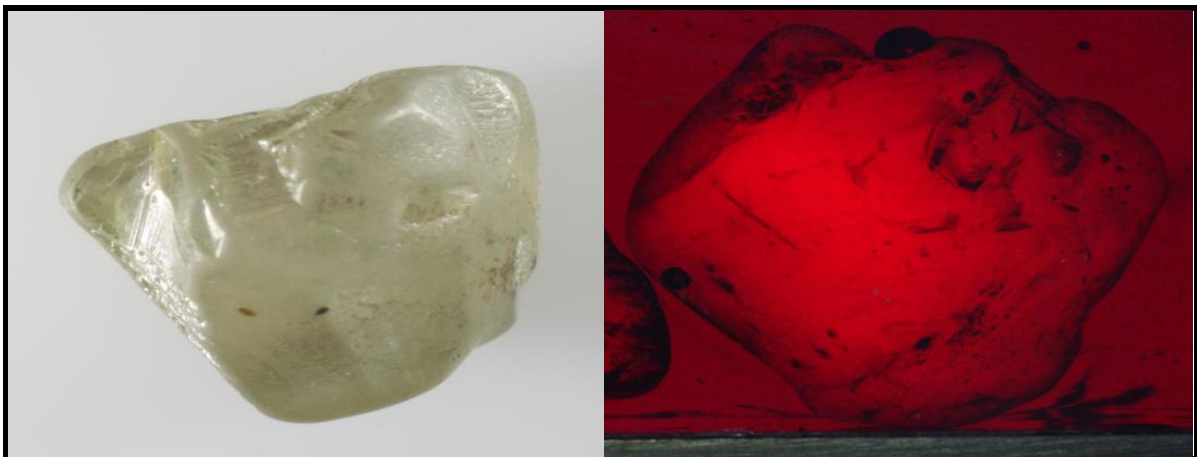
There is no royalty for Immersion Glass Technology. However, there is a yearly charge for plotting or checking on MBox using IG technology (After 1<sup>st</sup> March 2012). [Currently it is waived off]

### Q-21. What if I don't want to use this technology after some time?

There is no restriction on that. You can quit anytime without any obligations. But we are sure, this will never happen!!!

### Q-22. Other similar technologies cost Millions, then why your technology is cheaper? Are there any loop holes or hidden costs in your technology??

Our core value is to help our clients make maximum profit by using our technology. So when value appreciation is less while working with less expensive diamond, we charge very little.



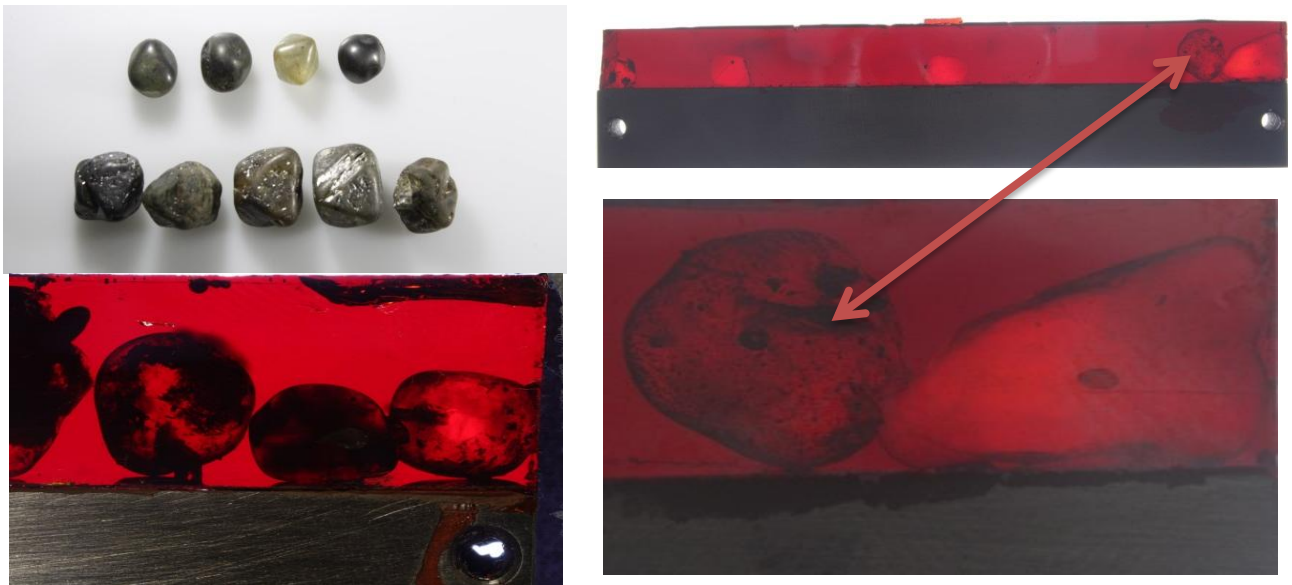
### Q-23. What if I want to purchase new glass?

It is available in required quantity. You can get glass in any amount from Lexus at cost of € 7 per gram.



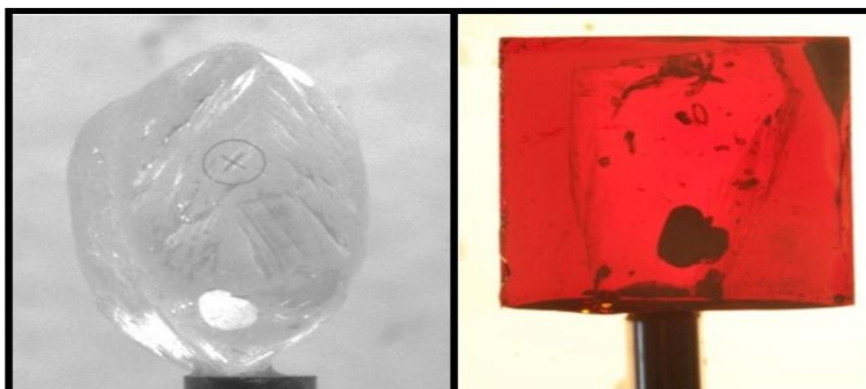
### Q-24. How iG is useful for rough traders?

You can prepare multiple stone in a single cassettes like as **Laser Kerfing cassette** without need of any scanner and take decision of your rough stone without any window. Just use your eye glass or maximum a Microscope.



### Q-25. Will there be any type of physical marking such as LASER marking on stone? Will I be able to resell the stone?

The innovative Immersion Glass Technology by Lexus will leave no mark of process on your stone. After planning and plotting on Immersion Glass molded stone, the stone will become exactly same as it was before process. You will be able to resell the stone if the stone is not profitable for you.



**No laser marking  
Required in  
Immersion Glass**

**Disclaimer:** Prices shown in this document are indicative. Prices may vary according to our policy. To know exact prices, please contact Lexus on: [support@lexus-com.com](mailto:support@lexus-com.com))



Contact Lexus to know more.....  
( <http://www.lexusindia.in> )



A-1 to A-4, R.S. No. 59, Near Sosyo Circle, Bamroli Road,  
Off. Udhna Magdalla Road, Surat- 395 017, INDIA.  
Ph. : +91 261 263 19 42, Fax. : +91 261 263 19 50  
Web : [www.lexusindia.in](http://www.lexusindia.in) E-mail : [sales@lexus-com.com](mailto:sales@lexus-com.com)

Reach us on:

