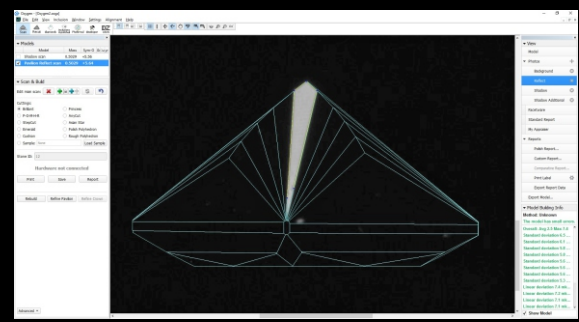
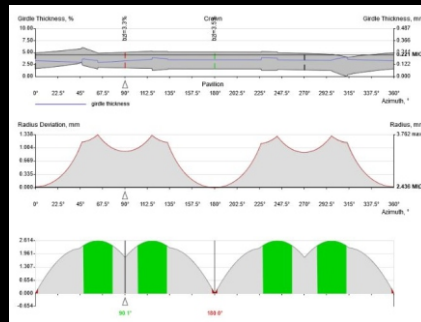
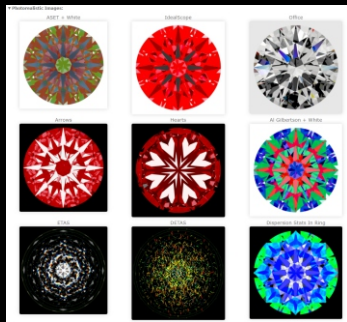


Accurately Pavilion Facet Junction Correction
Very Useful for Fancy Shapes



Introduction

- The Helium Polish diamond scanner is known to be the most precise and popular polish diamond scanner with a very intuitive software, used invariably by diamond cutting factories, laboratories and dealers alike.
- There comes the GURU, helping improve scan from the Helium Polish Shadow scanner. When a diamond scanned on HP shadow scanner is scanned on HP – Pavilion Reflect scanner, the information from the previous scan will be used to light the individual facets on the Pavilion, including Main facets. Based on the shine from the facet, the model will be corrected to result in very precise model building and accurate facet size, slope and azimuth angle measurement. Also the junctions which are not measured correctly on Helium Polish Scanner, specially for fancy shapes also get corrected automatically resulting in a very precise model building.
- This accurate 3D model can be used to calculate facet size and facet junction size with ultimate precision, allowing one to grade the polish diamond's cut grade, symmetry grade as well as minor symmetry, completely objectively.

Salient Features

- Scanning and report generation time as small as 2 Minutes.
- Consistent measurement readings comfort the grader grade the stone objectively. The minor symmetries are very precisely picked up, allowing graders to completely rely on the 3D model built by the scanner, and grade the symmetry objectively: Junctions as corrected and built by HP-PR scanner.
- Interactive 3D (i3D) report includes everything one wants in a report, including photoreal images and fold symmetry report.
- The program allows one to prepare optional* Custom Report to suitable any specific need or analysis.
- More than 3000 data fields are exported, including images for every scan.
- Useful for Rounds and almost all Fancies.
- Can build 3D models of special fancy cut diamonds with very high precision. while using sample ASC as scan reference.
- Helps polishers in correcting the multi-fold symmetry, and the grader to objectively grade the shape symmetry based on the scan data:

Specification

Model	HP-PR ⁺ 22.5
➡ Field of view	14.2mm X 22.6mm
➡ Polish Size	Minimum 4.5mm to Maximum 22.5mm
➡ Slope angle limit	20° to 70°
➡ Diamond types	Any Cut
➡ 3D-model accuracy	11.7 microns
➡ Standard ReCut option	Available
➡ Asymmetric Smart Recut Option based on GIA Facetware	Optional (Euro 3750)
➡ GIA Facetware based Grade estimation	Optional - Cut as well as Symmetry (Euro 1060)
➡ Soft HTML5 Report	Very advanced interactive 3D report (i3D report)
➡ Print reports	Available (Very detailed + User defined)
➡ Custom report	Available
➡ Mfg. Warranty	24 months
➡ Service Warranty	12 months
➡ Projected RBC range	0.35 to 38 Cts
➡ Projected Marquise range	0.60 to 10.7 Cts

Hardware Specification

Model	HP-PR ⁺ 22.5
➡ Lens	0.5x
➡ CMOS Camera	1/1.2" - 1936x1216
➡ Computer Requirements	Intel Core i7 8 th Generation 8700K or Higher and Ram 16GB
➡ Operating Systems	Windows 10 Professional - 64bit
➡ Weight	25 Kgs
➡ Dimentions L x W x H	92 x 19 x 24 (cm)
➡ Power consumption	220V 50Hz 300W