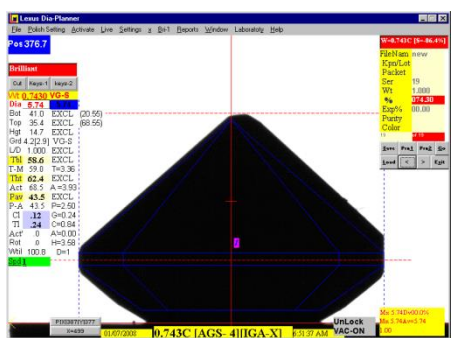


Single Camera Analyser



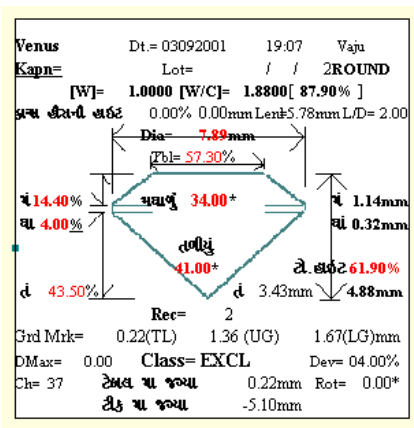
Parameter Distribution & Cut Analyzing System



Specifications

- ▶ Weight : 15 kg. (Excluding computer system)
- ▶ Dimension : 150 x 550 x 120 mm (Excluding computer system)
- ▶ Supply : 220 VAC , 50 HZ , 1 Phase
- ▶ Load : 400 VA
- ▶ Computer System : Standard PC Platform with Printer.
- ▶ Diamond Holding : Vacuum Pump Assisted.

- ▶ Increases yield by exploiting maximum size from rough using computer software.
- ▶ Immediate and accurate judgment of finished size and weight before actual cutting.



label		
Print	Font	Exit
Venus	Dt= 03092001	ROUND
Vaju	al	Charu=37
Lot= / /	1	Purity=
[W]= 100.00	[W/C]= 187.90	cts =187.90%
Dia= 7.89 mm	Thi= 61.9%-EX	
Bot= 41.0*-EX	Top= 34.0*-EX	
	Grd= 4.0%-EX	
Tbl= 57.3%-EX	G-p= 2.7%-EX	
Dim - % = 14.4 (Ct)+ 4.0 (G)+ 43.5 (Pv)= 61.9%		
MM= 1.14 (Ct)+ 0.32 (G)+ 3.43 (Pv)= 4.88mm		
GrdMrk=0.22 (TI) 1.36 (UG) 1.67 (LG) mm		
GrdMrk[16]= 1.62 (LG) mm		
TI= 0.22mm	Cl= -5.10mm	
Ha= 0.00mm	Hh= 0.00%	Rot= 0.00*L
Dmax= 0.00	Rec= 1	Dev= 0.0%
Class= EXCL		
PRINT	PRINT & EXIT	EXIT

Lexus Dia-analyser, the single camera module, is used predominantly in factories, after pre-bruting, Mainly for parameter distribution and cut class analysis.